

**LOCAL
PICK UP
INCLUDED**



PEORIA CHARTER
TRAVEL

**FREE
AIRFARE**

WITH AN ADDITIONAL
\$200 PP SAVINGS
BOOK AND DEPOSIT
BY MAY 31, 2025



Tulip Time on Jewels of the Rhine

the Netherlands • Germany • France • Switzerland

Departure Date: April 3, 2026


Mayflower
CRUISES & TOURS
A DIVISION OF THE SCENIC GROUP

Tulip Time on Jewels of the Rhine



Flowers and fragrances fill Keukenhof Gardens



Enjoy seven-nights cruising along the Romantic Rhine River

DAY 1 Depart the USA: Depart the USA on your overnight flight to Amsterdam, the Netherlands.

DAY 2 Amsterdam, the Netherlands: Welcome to Amsterdam, a fascinating 700-year-old city of picturesque canals, world class museums, and cafés. You will be met and transferred from the airport to your Emerald Cruises Star-Ship. Become acquainted with the amenities of your ship, or begin exploring the city. This evening, join your fellow travelers for dinner onboard. **Meal: D**

DAY 3 Amsterdam: This morning, depart by coach for an included visit to Keukenhof Gardens. Discover why it's called the 'Garden of Europe' as you admire gorgeous flowers at the peak of tulip season. Colorful displays of tulips, hyacinths, orchids and other flowers stretch as far as the eye can see as you stroll along the perfectly manicured meandering paths. Return to the ship for your first day cruising through the Dutch countryside, passing windmills and sailing through locks towards the Rhine River. Tonight, enjoy a welcome reception and gala dinner. **Meals: B, L, D**

DAY 4 Cologne, Germany: Cruise along the Rhine River to Cologne. Founded by the Romans, the city is one of Germany's oldest and famous for its magnificent World-Heritage gothic cathedral. Today's touring includes a guided walking tour of the city, traversing quaint alleyways, seeing historic monuments and touching on the historical charm of the Old Town. A visit to Cologne's Botanical Gardens showcases local flora. This evening, enjoy local entertainment onboard. **Meals: B, L, D**

DAY 5 Koblenz: Cruise to the 2000-year-old town of Koblenz, situated at the confluence of the Rhine and Moselle Rivers. Enjoy a walking tour of Koblenz seeing the German Corner where the 2 rivers meet, the Church of Our Lady, and visit the Ehrenbreitstein Fortress by cable car on the opposite side

of the river. This fortress was part of the Prussian defense against the French in the 19th century and later used as a headquarters for the American military during WWII. This afternoon, sail through the spectacular UNESCO World-Heritage Rhine Gorge. Pass countless medieval castles and vineyards lining the shores of this section of the river, with photo opportunities around every bend. See the infamous Lorelei statue and Pfalzgrafenstein Castle, built on an island in the middle of the river as a medieval toll station. **Meals: B, L, D**

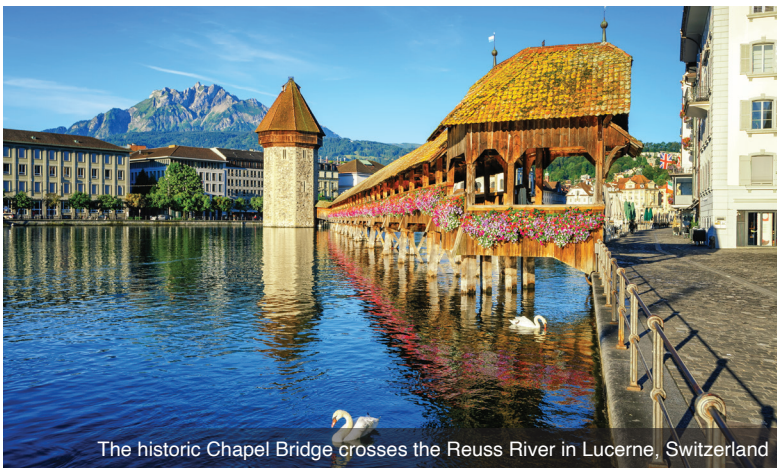
DiscoverMORE: Moselle & Cochem (Reichsburg) Castle Visit (additional expense)

NOTE: You can choose either the included tour of Koblenz OR the DiscoverMORE option, as both tours operate at the same time.

DAY 6 Ludwigshafen – Schwetzingen: Relax onboard as the vessel cruises along the Rhine River to Ludwigshafen. Upon arrival travel by coach to visit Schwetzingen Palace, famous for the beauty and harmony of its gardens. Visit the interior of the palace, along with the beautiful gardens, maintained in their original design. Today they remain a cultural heritage site of European significance, and contain more than 100 sculptures scattered throughout the grounds. Alternatively, embark on an active journey to the quaint wellness town of Bad-Dürkheim for a hike through the beautiful vineyards. **Meals: B, L, D**

EmeraldPLUS: Visit to Schwetzingen Palace & Gardens
EmeraldACTIVE: Guided vineyard hike in Bad-Dürkheim (instead of included tour)

DAY 7 Kehl / Strasbourg, France: Once docked in Kehl, travel by coach across the river to Strasbourg, the capital of the Alsace region in France. Your guided walking tour includes the Grande Île - the historical city center and UNESCO World Heritage Site. Known for its medieval black and white timber-framed buildings, old tanning houses, baroque sandstone buildings, canals and river locks, the city's star attraction is the cathedral, dominating the main square. This evening, local entertainment is performed onboard. **Meals: B, L, D**



The historic Chapel Bridge crosses the Reuss River in Lucerne, Switzerland

DAY 8 Breisach, Germany: Experience the ‘tale of two cities’: Breisach, Germany and Neuf-Breisach, France, divided by the Rhine. During the guided visit to these two wonderful gems on the Rhine River, you’ll pass the main sights and attractions, including the UNESCO World Heritage fortress overlooking Neuf-Breisach. **Meals: B, L, D**

EmeraldPLUS: A tale of two cities divided by the Rhine

EmeraldACTIVE: Guided bike tour in Breisach

DAY 9 Huningue, France – Lucerne, Switzerland: After breakfast, disembark the ship in Huningue and begin your Swiss adventure. Depart by coach to Lucerne, a picturesque town surrounded by mountains and meadows. An included walking tour highlights the city’s landmark - the famous 14th-century Chapel Bridge. See the 17th-century Renaissance Town Hall and town squares, all set amongst the beautiful backdrop of the Swiss Alps. The remainder of the day is at leisure. **Meal: B**

DAY 10 Lucerne: Your last day is left free of planned activities. Explore on your own, or join the optional excursion to Mt. Pilatus – a mountain overlooking Lucerne that offers a unique alpine experience! This evening, get together for an included dinner at the hotel. **Meals: B, D**

DiscoverMORE: Mt. Pilatus (additional expense)

DAY 11 Lucerne / USA: Bid ‘auf wiedersehen’ to Europe and return home with memories of life enriching experiences from your European adventure and cruise along the Rhine River during tulip time. **Meal: B**

Itinerary and excursions are subject to change.

CRUISE AND HOTEL ACCOMMODATIONS

Days 2 through 8 – Aboard an Emerald Cruises Star-Ship

Days 9 and 10 – Hotel Europe or similar, Lucerne, Switzerland
Pre-cruise hotel stays available in Amsterdam. Call for details.



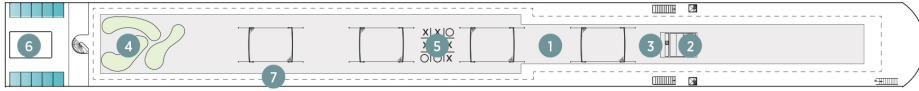
Exceptional Inclusions

- **23 Meals:** 9 breakfasts, 6 lunches and 8 dinners
- **Airport transfers** on tour dates when air is provided by Mayflower Cruises & Tours
- **Visit four countries**
- **Seven-nights in a suite or stateroom** of your choice onboard the vessel
- **First-class service** by an English-speaking crew
- **Onboard Activity Manager** will support all EmeraldACTIVE excursions and host daily onboard wellness activities, games, classes and evening entertainment
- **All gratuities included**
- Explore the magnificent **Keukenhof Gardens**
- **Shore excursions** with English-speaking local guides
- Visit **UNESCO World Heritage Sites**
- Personal **listening device** for shore excursions
- **All meals included** onboard
- Variety of **international cuisine**
- Complimentary **regional wines, beer and soft drinks** with onboard lunches and dinners
- Complimentary **bottled water** in your stateroom
- Complimentary **WiFi onboard**
- Complimentary **bicycles onboard** for use ashore
- **All port charges included**
- **Two-night hotel stay and touring in Lucerne**

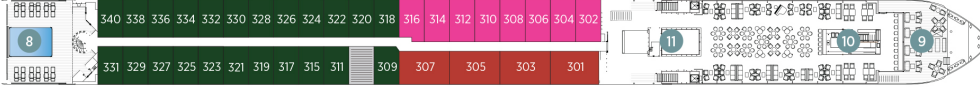
Emerald Cruises Star-Ships

Built: 2014-20 **Speed:** 15.5 mph **Staterooms:** 19 **Suites:** 72 **Length:** 443 ft. **Crew:** 47

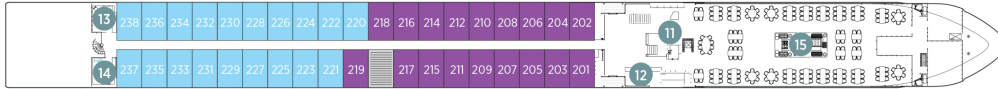
SUN DECK



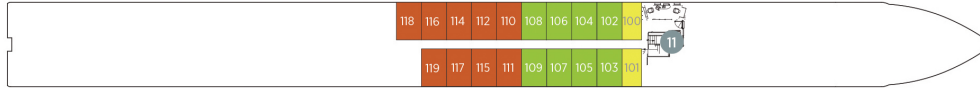
HORIZON DECK



VISTA DECK

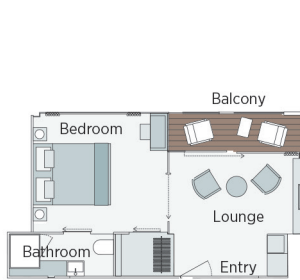


RIVIERA DECK



Public Areas and Ship Amenities

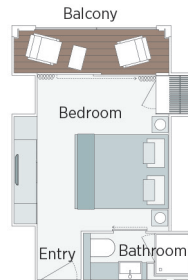
- 1 Sun Deck with Deck Chairs
- 2 Navigation Bridge
- 3 Sky Barbeque
- 4 Golf Putting Green
- 5 Games Area
- 6 Retractable Glass Roof
- 7 Walking Track
- 8 Daytime Pool / Evening Cinema
- 9 The Terrace
- 10 Horizon Bar and Lounge
- 11 Elevator
- 12 Reception
- 13 Wellness Area
- 14 Fitness Area
- 15 Reflections Restaurant



Owner's One-Bedroom Suite

315ft²

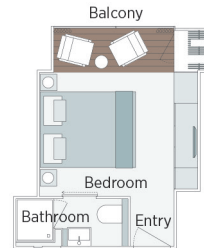
CAT SA



Grand Balcony Suite

210ft²

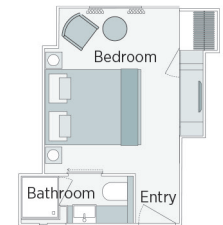
CAT S



Panorama Balcony Suite

180ft²

CAT A **CAT B** **CAT C**



Emerald Stateroom

162ft²

CAT D **CAT E**

Tulip Time on Jewels of the Rhine

| APRIL 3, 2026 | | | | |
|---------------|---------------------------|---------|-----------------|-----------------|
| CAT | STATEROOM / SUITE | DECK | PER PERSON TWIN | SINGLE ROOM ADD |
| E | Emerald Stateroom | Riviera | \$5,315 | + \$3,725 |
| D | Emerald Stateroom | Riviera | \$5,425 | + \$3,799 |
| C | Panorama Balcony Suite | Vista | \$6,085 | + \$4,259 |
| B | Panorama Balcony Suite | Vista | \$6,389 | + \$4,475 |
| A | Panorama Balcony Suite | Horizon | \$6,689 | + \$4,685 |
| S | Grand Balcony Suite | Horizon | \$7,159 | N/A |
| SA | Owner's One-Bedroom Suite | Horizon | \$8,115 | N/A |

Pricing includes Local Transfers to/from O'Hare Airport, and Roundtrip Air from Chicago O'Hare Airport If you Book/Deposit by MAY 31, 2025.

After MAY 31, 2025, please add \$850 for RT air.



Travelers Protection Plan (TPP) for River Cruises

\$499 per person when cabin price is less than \$5,000

\$569 per person for cabin pricing above \$5,000

This nonrefundable fee will provide a refund to you during the instance that you have to cancel your trip. The cancellation has to be for a covered reason (See Plan for details on coverage) and we have to be notified at least one day prior to departure. If you must leave the tour early due to personal illness or the illness or death of an immediate family member, TPP will provide a refund for any unused services after the departure of the tour. Other benefits include medical expenses for illness and injury, emergency transportation, 24 hour hot line and lost or stolen baggage assistance. Return air transportation is included ONLY if your air tickets are purchased through Mayflower Cruises & Tours. Please review the Plan for details on coverage. Should you choose not to purchase our TPP, the following per person cancellation charges will be assessed for all tours and optional excursion costs:

- 91 days or more prior to departure: Deposit Amount
- 90 days to day of departure: 100% of total tour
- No refund on unused portions of the tour

Exclusions: Mayflower Cruises & Tours reserves the right to alter its Refund and Cancellation Policy when a substantial amount of cancellation or postponement of travel is attributable to: conditions resulting from an act of God, natural or man-made disaster, fire, government action, civil disorder, war, hostilities between nations, or unavailability of transportation through no fault of Mayflower Cruises & Tours. *Plan and benefits offered and administered by Trip Mate, Inc.*



FOR RESERVATIONS OR INFORMATION CONTACT:



PEORIA CHARTER TRAVEL

309-266-8000, 309-662-6951 or

866-722-4234

Travel@PeoriaCharter.com