

Exclusive Charter

PREMIER
WORLD DISCOVERY



Peoria Charter Travel presents

Holland Windmills, Waterways & Tulips River Cruise



featuring 7 Nights aboard the Amadeus Amara

9 Days **April 20, 2026**



**BOOKING
DISCOUNT!**

Save \$200 per person
\$400 per couple*

*See Reservation Info for
Booking Discount details



Bruges



Kinderdijk

9 Days April 20, 2026

Holland Windmills, Waterways & Tulips River Cruise

Day 1 - DEPART US - OVERNIGHT FLIGHT TO EUROPE

Day 2 - ARRIVE AMSTERDAM - BOARD SHIP

Arrive Amsterdam Airport & Meet your PWD Tour Manager/Representative(s)
Board the **Amadeus Amara** for 7 Night Cruise - **Welcome Dinner** Onboard

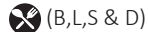


Overnight - Amadeus Amara

Day 3 - ARNHEM

Morning **Arnhem City Tour & WWII History** with Airborne Museum

Afternoon at Leisure or *Optional Dutch Open Air Museum Arnhem*

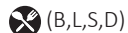


Overnight - Amadeus Amara

Day 4 - CRUISING - MIDDELBURG

Morning Arrive Middelburg - **Middelburg Walking Tour**

Time at Leisure in Middelburg or *Optional Visit to Veere*

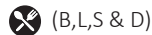


Overnight - Amadeus Amara

Day 5 - GHENT - BRUGES

Morning **Bruges City Tour**, "Venice of the North"

Afternoon at Leisure or *Optional Ghent City Tour with Gravensteen Fortress*

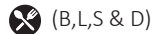


Overnight - Amadeus Amara

Day 6 - ANTWERP

Morning at Leisure or *Optional Brussels City Tour*

Afternoon **Antwerp City Tour**

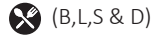


Overnight - Amadeus Amara

Day 7 - ROTTERDAM

Morning **Keukenhof Flower Gardens**

Afternoon **Kinderdijk & Windmills Visit** - Ship departs during dinner



Overnight - Amadeus Amara

Day 8 - AMSTERDAM

Morning **Amsterdam Canal Cruise Tour**

Afternoon Leisure in Amsterdam to explore or *Optional Visit to Volendam*

Gala Farewell Dinner Onboard



Overnight - Amadeus Amara

Day 9 - AMSTERDAM - FLIGHT HOME

Disembark - Transfer to Amsterdam Airport or join Post Amsterdam Extension



B-Breakfast Onboard • S-Snacks Onboard afternoon and/or evening
L-Lunch Onboard • D-Dinner Onboard with Hand Selected Wines, Beer & soft drinks

CITIES & PORTS

AMSTERDAM

Board your cruise ship in **Amsterdam**, founded as a small fishing village in the late 12th century & one of the most important ports in the world. Today, the city has one of the largest historic centers in Europe with about 7,500 registered historic buildings & 90 islands linked by 400 bridges. Enjoy a **Amsterdam Canal Cruise Tour** featuring a cruise by beautiful homes through the intricate canal system. From Amsterdam, an optional tour will be available to the picturesque old fishing village of Volendam with a stop at a local cheese farm to sample the product.

ARNHEM

Arrive in Arnhem to enjoy an **Arnhem City Tour & WWII History**. Drive through Arnhem and past many spots associated with WWII including the 'The Bridge of Arnhem'. Visit the Airborne Museum in Oosterbeek, a historic hotel turned British Headquarters during Operation 'Market Garden'. In the afternoon an optional tour will be available to the Dutch Open Air Museum in Arnhem.

MIDDELBURG

Arrive in Middelburg, the capital of the province of Zeeland. Enjoy a **Middelburg Walking Tour** past the stately warehouses, impressive monuments such as the town hall, the abbey and more. An optional tour will be available to the picturesque town of Veere featuring a Dutch specialty & wine tasting.

GHENT - BRUGES

Today from Ghent, travel west to enjoy a **Bruges City Tour**, one of Europe's great cities and like Amsterdam referred to as the 'Venice of the North' due to its canal system. Bruges is Gothic fairy-tale like city with cobbled streets, canals and medieval churches remarkably well-preserved having been spared the devastation that saw much of Belgium leveled during both World Wars. The historic marketplace and center of old Bruges is a UNESCO site. Later today maybe take the optional tour to Ghent to see the St. Bavo Cathedral & the fortress Gravensteen, one of Europe's largest moated castles.

ANTWERP

Discover the beautiful port city of Antwerp. Today enjoy an **Antwerp City Tour** featuring a walk through the attractive old city center and visit to the Onze-Lieve-Vrouwe Cathedral, the largest Gothic church in Belgium. The city is also well known for its diamond trade and lively shopping scene. An optional tour to Brussels, famous for its central square, the Grote Markt, will be available.

KEUKENHOF FLOWER GARDENS

Visit the famous **Keukenhof Gardens**, the Garden of Europe and the world's 2nd largest flower garden with 7 million bulbs planted annually. This is the showplace for the tulip growers of the Netherlands & features numerous sculptures between the flower beds to create harmony between art and nature.

KINDERDIJK & WINDMILLS

Enjoy a **Kinderdijk & Windmills Visit**, which houses the most unique windmill complex in the world. Built to drain water from the soil, these windmills are now protected by UNESCO and are one of the Netherlands' most popular tourist destinations.

Optional 2 Night Amsterdam Post-Cruise Extension

\$899 pp dbl +\$450 single supplement

Day 9 HAARLEM - AMSTERDAM

(Meal - B from ship)

Enjoy a **Haarlem City Tour**, outside of Amsterdam & famous for flower bulbs. See and explore its lovely historical center, beautiful canals, medieval features, gabled houses and great shopping streets. Later visit the famous **Rijksmuseum**, the largest museum in the Netherlands containing over 800 years of Dutch art & history. Check in for 2-Night stay in Amsterdam.

Day 10 AMSTERDAM AT LEISURE

(Meal - B & D)

Enjoy a day to explore Amsterdam on your own. This evening enjoy dinner with your fellow travelers.

Day 11 TRANSFER - FLY HOME

(Meal - B)

This morning transfer to the Amsterdam Airport for your flight home.

Amsterdam Optional Extension Includes: 2 Nights Hotel in Amsterdam, Rijksmuseum Entrance, Haarlem City Tour, Tour Manager, 3 Meals (2-B & 1-D) & AMS Airport Transfers.

Notes: Amsterdam Extension must be booked at time of deposit. Due to group air policies outbound air could be a different schedule than the rest of your group for Amsterdam extension passengers • Amsterdam extension is based on 20 passenger minimum



Amadeus Amara

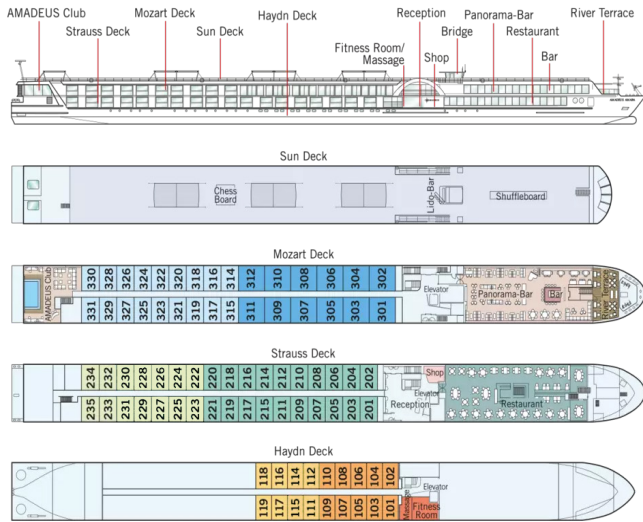


Fine Dining



Fitness Center

AMADEUS AMARA DECK PLAN



THE SHIP - MS AMADEUS AMARA

Step into the new era of river cruising on the custom designed 164 passenger Amadeus Amara, launched in 2025. The ship offers all the amenities of a floating 5-star hotel and features the most modern furnishings that blend masterfully with the architecture of the ship and a luxurious design that is the hallmark of the Amadeus fleet. The extensive Restaurant and the Panorama Bar offer divine views of the passing riverscapes, and the glass-shielded River Terrace & the Sun Deck allow you to enjoy the open air. The attentive English-speaking onboard service staff will see to your comfort with typical European hospitality. The cabin design plans are forward-thinking, bright & modern, all part of a premium focus with 70 large Staterooms & 12 Suites. The ship features an indoor pool, fitness center, massage spa and shop. The beauty of river cruising is that the most interesting destinations come to you. This charter features English-only onboard commentary with inclusive shore excursions balanced with choice to simply relax onboard, get a spa treatment or add sightseeing with optional excursions.

ALL MEALS INCLUDED ONBOARD

Three meals daily are served graciously in the exquisite restaurant and feature local & international specialties. All dinners are four courses and are served with included Hand Selected Wines, Beer & soft drinks. While dining, you have splendid views of the passing scenic landscapes through the large picture windows. Enjoy afternoon and/or late evening snacks in the lounge based on the daily schedule.

COMFORTABLE & INNOVATIVE STATEROOMS

After boarding, unpack once. All staterooms are large and offer excellent river views. The Mozart Deck features 12 Suites with Walk Out Balconies. The other 18 Staterooms on the Mozart Deck & 34 Staterooms on the Strauss Deck feature a floor-to-ceiling window. The 18 Staterooms on the Haydn Deck have a fixed window. All staterooms are fully equipped with comfortable & modern furnishings including flat screen TV & large private bathrooms with shower.

SHIP TECHNICAL DATA

Launched: 2025
Decks/Crew: 4/46
Staterooms/Suites: 70/12
Max passengers: 164

ACTIVITY LEVEL

Easy **1** **2** **3** **4** Active

Notes - Excursions require moderate walking with some stair climbing possible.
-Hotel/Ship Check in time in Europe typically begins between 3-4 pm.

INCLUSIONS

- Roundtrip Airfare - ORD
- 7 Night Cruise - Outside Cabin
- 20 Meals (7-B, 6-L & 7-D)
- PWD Tour Manager
- Hand Selected Wines, Beer & soft drinks with Dinners
- 7 Included Excursions/Tours
- Wi-Fi Onboard
- Welcome & Farewell Dinners Onboard
- Ship Staff
- Baggage Handling
- Int'l Air Taxes/Fuel/Fees & Port Charges
- Ship Transfers

EXCURSIONS/TOURS

- Amsterdam Canal Cruise Tour
- Keukenhof Flower Gardens
- Bruges City Tour
- Arnhem City Tour & WWII History
- Middelburg Walking Tour
- Antwerp City Tour
- Kinderdijk & Windmills

Optional Excursions

- Dutch Open Air Museum in Arnhem
- Veere with Dutch Tasting
- Ghent City Tour
- Brussels City Tour
- Volendam & cheese farm

RATES

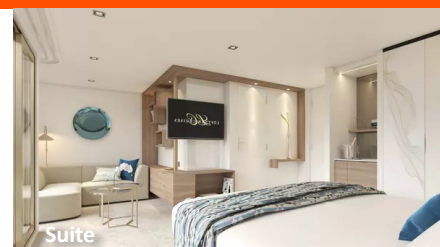
Cat E - Haydn Deck	\$5595 pp dbl*	\$5395 pp dbl with BD**	+\$1500 single
Cat D - Haydn Deck	\$5895 pp dbl*	\$5695 pp dbl with BD**	+\$1500 single
Cat C - Strauss Deck	\$6395 pp dbl*	\$6195 pp dbl with BD**	+\$1900 single
Cat B - Strauss Deck	\$6595 pp dbl*	\$6395 pp dbl with BD**	+\$1900 single
Cat A - Mozart Deck	\$6795 pp dbl*	\$6595 pp dbl with BD**	+\$2300 single
Suite - Mozart Deck	\$7395 pp dbl*	\$7195 pp dbl with BD**	+\$2900 single

*Regular Rate or **Save \$200 per person/\$400 per couple with Booking Discount Rates (BD)

STATEROOMS & SUITES



Mozart/Strauss Stateroom



Suite

STATEROOMS - 172 or 188 SQ FT

All staterooms feature 2 twin beds that can be separated or put together, flat screen TV, shower, hair dryer, closet, phone, desk, chair & safe. Mozart & Strauss Staterooms feature floor-to-ceiling panoramic windows with 188 sq. ft. of floor space. Haydn Deck Staterooms feature a fixed window with 172 square feet of floor space.

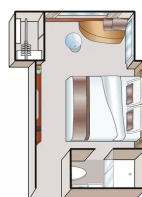
(Stateroom size & amenities can vary)

SUITE - 284 SQ FT WITH BALCONY

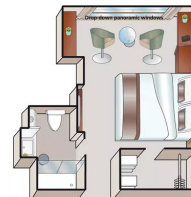
All suites are on the Mozart Deck and have panoramic windows with exterior Walk Out Balcony, two twin beds that can be separated or put together, a private sitting area, flat screen TV, mini-bar, private bath with shower, hair dryer, phone, closet, desk, chair, safe & offer 284 square feet of floor space.

(Suite size and amenities can vary)

Stateroom Haydn Deck (172 sf)



Stateroom Strauss & Mozart Decks (188 sf)



Suite Mozart Deck (284 sf)



Reservation Form (River Cruise)Holland Windmills, Waterways &
Tulips River Cruise

April 20, 2026

Booking #201297 (Web Code)

Contact Information/Mail Reservation Form to:

Peoria Charter Travel

1503 E College Avenue, Unit D

Normal, IL 61761

866.722.4234 • travel@peoriacharter.com

Cabin Category Requested: (All Cabin Categories are on a space available basis)Cat E: ☐ Cat D: ☐ Cat C: ☐ Cat B: ☐ Cat A: ☐ Suite: ☐Enclosed please find a deposit in the amount of \$ _____ (\$600 per person) to secure
reservations for _____ # of people.Premier's Travel Protection Plan (TPP): ☐ Yes, I (we) wish to purchase travel protection (TPP)☐ No, I (we) decline travel protection (TPP)Enclosed please find payment in the amount of \$ _____ (\$525 per person) to
secure the Premier's Travel Protection Plan (TPP). (TPP must be purchased with initial deposit)I / we want to purchase the 2N Amsterdam Post-Cruise Extension*** (\$899 pp dbl/+\$450 SS) ☐ Yes ☐ No

***Please book the Amsterdam Post-Cruise Extension with initial deposit.

TOTAL PAYMENT \$ _____ **Make checks payable to: Peoria Charter Travel****RT AIR GATEWAY** _____ **ROOMMATE'S RT AIR GATEWAY** _____

see flyer page 3 for included group RT gateway/departure city, additional charges apply for other RT air packages

To avoid change fees, submit Passport names (first/mid/last) exactly as they appear on Passports

Passport Name: _____DOB (MM/DD/YY) _____ Gender ☐ M ☐ F

Passport #: _____ Exp Date (MM/DD/YY) _____

Country of Issuance _____

Street Address _____ ☐ Check if Roommate's address is the same

City _____ State _____ ZIP _____

Email address _____

Mbl# _____

Emergency Contact/Tel# _____

Notes: _____

Roommate's Passport Name: _____DOB (MM/DD/YY) _____ Gender ☐ M ☐ F

Roommate's Passport #: _____ Exp Date (MM/DD/YY) _____

Country of Issuance _____



Cardholder Name (If paying by credit card) _____

Credit Card # _____ Exp Date: _____

CVV# _____ Amount to be charged \$ _____

Credit Card Billing Address: ☐ Check if address is the same as above

Address _____ City _____

State _____ ZIP _____ Tel# _____

Sign _____ Date _____

SIGNATURE REQUIRED (for credit card use & acceptance of terms*)*I (We) agree to pay according to the credit card issuer agreement. I understand and accept the
cancellation fees/policy and other terms.**DEPOSIT & FINAL PAYMENT**An Initial Deposit of \$600 per person is due with Reservation Form to secure
reservations. Final Payment Due Date is 90 days prior to departure.***BOOKING DISCOUNT**

Make your Final Payment by check prior to the Final Payment Due Date

& receive **\$400 per couple/\$200 per person Booking Discount!****Cruise Only Packages receive \$200 per couple/\$100 per person BD.**

• Initial Deposit can be made by check or credit card to be eligible.

• Payments after Initial Deposit are part of Final Payment & must be made by
check.**ONLINE BOOKING OPTION**

Save time, postage & secure your seat for this group departure. Simply type:

https://res.premierworlddiscovery.com into your web browser & use the
Booking Number (Web Code) from this flyer to make your Deposit online in
just a few minutes. No need to submit a Reservation Form if booking online.**PREMIER'S TRAVEL PROTECTION PLAN (TPP) \$525 per person**

(must purchase with Initial Deposit)

Part A – Cancellation Waiver provided by PWD**I. Trip Cancellation Waiver (TCW)** - Guarantees full refund on all payments,
except the Trip Cancellation Waiver Fee itself in case of cancellation up to the
time and date of departure due to the passenger's personal illness or death
of an immediate family member. Medical/official documentation required.**II. Premier "Any Reason" Cancellation Waiver (ARCW)** - Reimburses 75%
of the cancellation fees in the form of a future travel credit certificate (FTCC)
valid for 1 year, if you cancel more than 48 hours prior to scheduled departure
for any reason not eligible for cash refund under the TCW (Part A – I.). FTCC
is non-transferable, may not be redeemed for cash and does not include
any credit for the Trip Cancellation Waiver Fee. **The Trip Cancellation
Waiver Fee must be paid for with Initial Deposit and is refundable until 180
days prior to departure. The Trip Cancellation Waiver does not cover any
single supplement charges due to an individual's traveling companion
canceling prior to departure.** The Trip Cancellation Waiver is non-transferable
and valid for each applicant only. The Trip Cancellation Waiver does not cover
any services such as airline tickets not purchased through PWD. Cancellations,
Refunds & Inquiries under Part A will be handled by PWD. Certain Exclusions
and Restrictions apply.**Part B – Post Departure Travel Protection Plan* provided by USI**Includes coverage for: Trip Interruption (\$1,000); Trip Delay (\$100/Day-Max
\$500); Baggage & Personal Effects (\$2,000); Baggage Delay (\$500); Emergency
Accident/Sickness Medical Expense- excess coverage (\$30,000); Emergency
Evacuation/Repatriation (\$150,000); Accidental Death & Dismemberment
(\$25,000); Non-Insurance and Emergency Travel Assistance Services**
(24/7). Claims & Inquiries under Part B will be administered by USI.**For full Part A and Part B plan details visit: premierworlddiscovery.com/TPP**All Benefits described on this page are for general information basis only.
There are certain restrictions, exclusions and limitation that apply to all insurance
coverages. Plan benefits, limits and provisions may vary by state jurisdiction.**CANCELLATION FEES**

Cancellations are subject to the following per person fees;

- Cancel 180 days prior to departure:	\$200 pp is retained
- Cancel 179-90 days prior to departure:	Deposit or TPP** is retained
- Cancel 89-60 days prior to departure:	50% of total price
- Cancel 59-30 days prior to departure:	75% of total price
- Cancel 29 days or less prior to departure/no shows:	No refunds

**If TPP purchased

RESPONSIBILITYWorld Tours LLC dba Premier World Discovery (hereafter PWD), whose vouchers
are used by respective agents for the passenger in all matters pertaining to
hotel accommodations, sightseeing tours and transportation, hold themselves
free of responsibility for any damages occasioned from any cause whatsoever.
PWD will not be responsible for any damages or inconvenience caused by late
arrivals, departures and change of schedule or other conditions nor will they
be responsible for any act, omission, or event during the time the passenger
is not on board their conveyance. The passage contract in use by the airline
concerned, when issued, shall constitute the sole contract between the airline
and the purchaser of this tour/cruise, and/or passenger. PWD does not hold
any responsibility for the conduct of any of its members, hotel, motorcoach,
cruiseline, train, airline or other personnel. PWD reserves the right to decline
to accept or retain any person as a member of a tour/cruise at its discretion.
PWD &/or its Tour Director retain the right to require any participant to
withdraw from a tour/cruise at any time, if determined to be in the best
interests of health, safety & general welfare of the tour/cruise group or of the
individual participant. Arbitration- I/We agree, any and all disputes concerning
this contract or any other material concerning the trip, or the trip itself must
be resolved exclusively pursuant to binding arbitration in the state of California,
pursuant to the then current rules of the American Arbitration Association.
Payment of the deposit for this tour/cruise constitutes acceptance of these
terms and conditions. CST #2048841-40**IMPORTANT CONDITIONS/NOTES**

- A valid US passport is required for this tour and is the responsibility of each
passenger. Passports should be valid for up to six (6) months beyond the travel
dates. All names must be submitted to Premier exactly as they appear on
passenger passports.
- Itinerary and hotels are subject to change.

AIR NOTE/SEAT REQUESTS/AIRLINE BAG FEES:Air Schedules may not be available until Final Trip Documentation is received.
Airline baggage fees & seat assignment fees are not included in tour rates.
Many airlines do not provide advance seat assignments until check-in at the
airport. If specific seat requests or airline choice is extremely important to
your reservation, we recommend you book land only and make your own air
reservations. Please make this adjustment to land only/own air at time of tour
reservation.